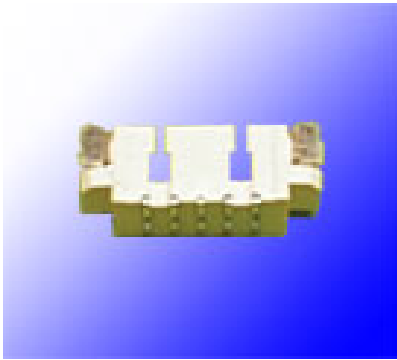
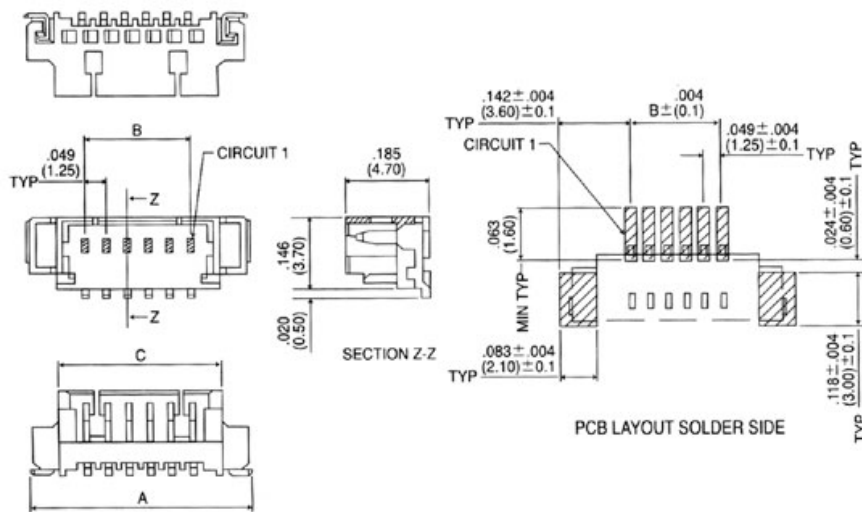


### FEATURES:

- 2-15 Circuits
- Voltage Rating: 250V AC, DC
- Current Rating: 1A AC, DC
- Withstanding Voltage: 250V AC/Minute
- Insulation Resistance: 100M Ohm min.
- Temperature Range: -40°C to +85°C (Including temperature rise in applying electrical current)
- Contact Resistance: Initial Value/10m Ohm max. After Environmental Testing/20m Ohm max.
- Material: Nylon 46 UL94V-0+30% Glass Fiber



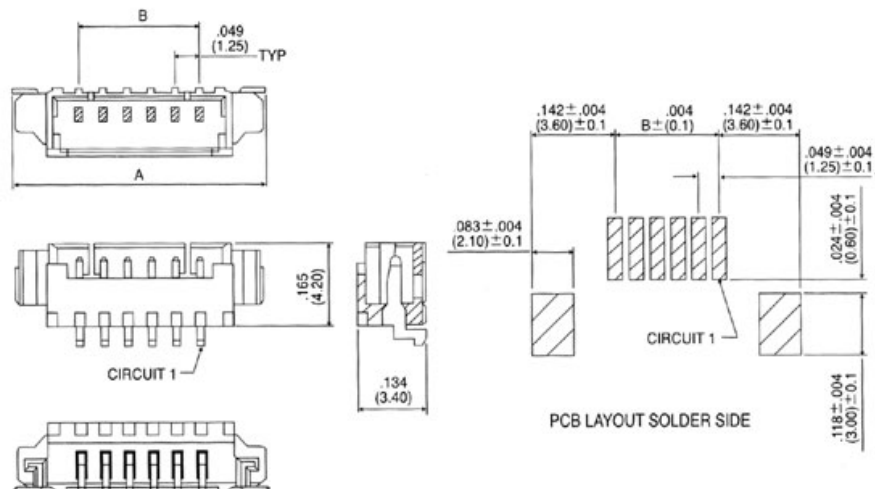
### TOP ENTRY (180°)



### TOP ENTRY(180°)

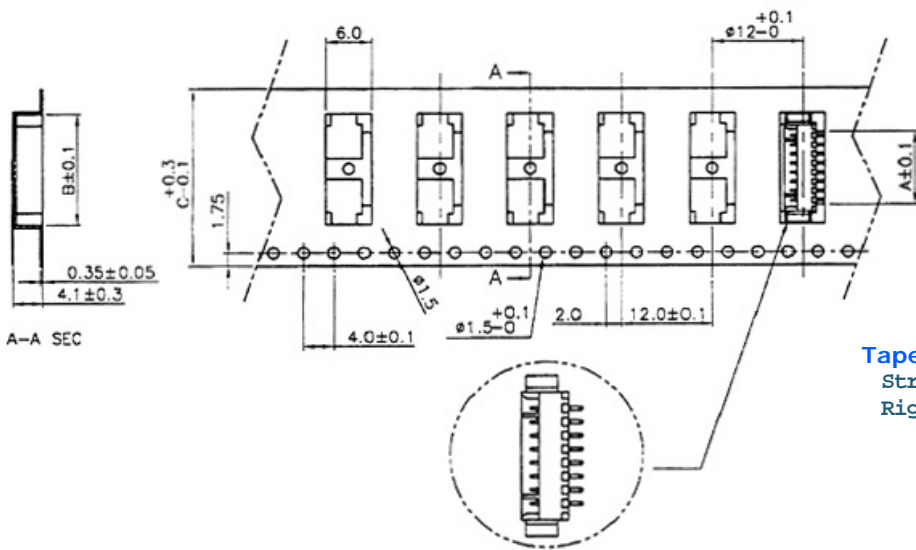
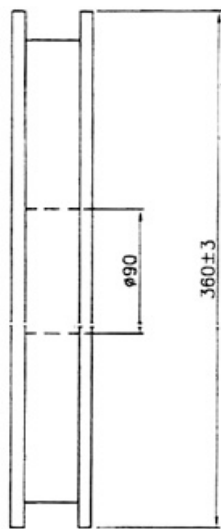
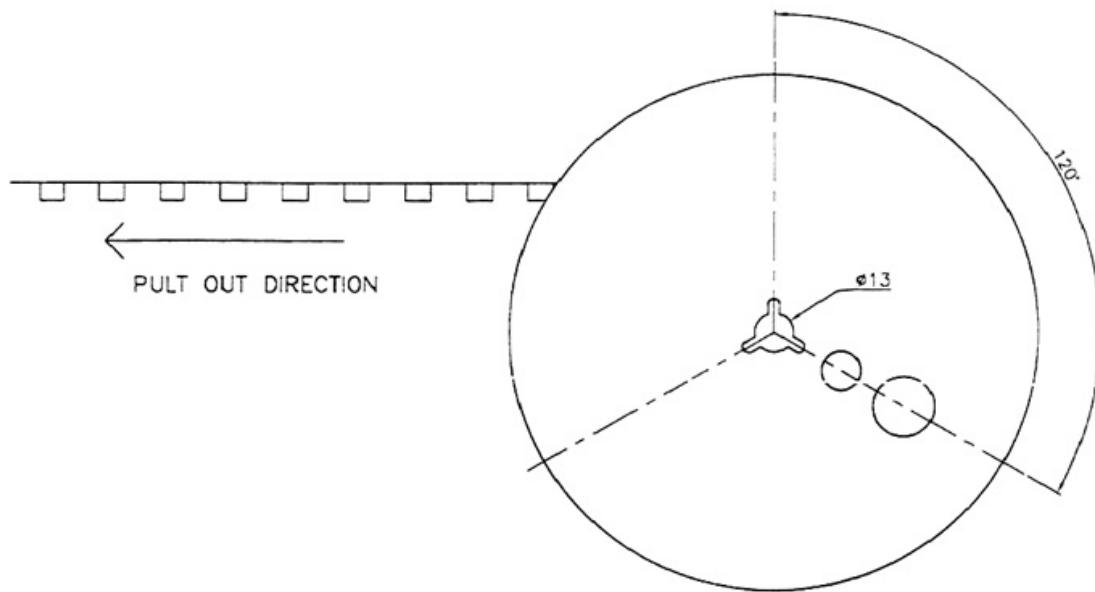
Contacts	Dimensions in. (mm)		
	A	B	C
2	7.65(.301)	1.25(.049)	4.25(.167)
3	8.90(.350)	2.50(.098)	5.50(.216)
4	10.15(.400)	3.75(.148)	6.75(.265)
5	11.40(.449)	5.00(.197)	8.00(.314)
6	12.65(.498)	6.25(.246)	9.25(.364)
7	13.90(.547)	7.50(.295)	10.50(.413)
8	15.15(.596)	8.75(.344)	11.75(.462)
9	16.40(.645)	10.00(.393)	13.00(.511)
10	17.65(.694)	11.25(.442)	14.25(.561)
11	18.90(.744)	12.50(.492)	15.50(.610)
12	20.15(.793)	10.75(.541)	16.75(.659)
13	21.40(.842)	15.00(.590)	18.00(.708)
14	22.65(.891)	16.25(.639)	19.25(.757)
15	23.90(.940)	17.50(.688)	20.50(.807)

### SIDE ENTRY (90°)



### SIDE ENTRY(90°)

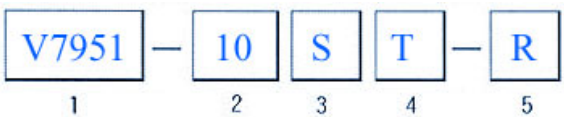
Contacts	Dimensions in. (mm)	
	A	B
2	7.65(.301)	1.25(.049)
3	8.90(.350)	2.50(.098)
4	10.15(.400)	3.75(.148)
5	11.40(.449)	5.00(.197)
6	12.65(.498)	6.25(.246)
7	13.90(.547)	7.50(.295)
8	15.15(.596)	8.75(.344)
9	16.40(.646)	10.00(.394)
10	17.65(.695)	11.25(.443)
11	18.90(.744)	12.50(.492)
12	20.15(.793)	13.75(.541)
13	22.65(.892)	16.25(.640)
14	23.90(.941)	17.50(.689)



Poles	Dimensions(mm)		
	A	B	C
2	4.60	7.70	16.00
3	5.85	8.90	16.00
4	7.10	10.20	24.00
5	8.35	11.40	24.00
6	9.60	13.90	24.00
7	10.85	14.00	24.00
8	12.10	15.20	24.00
9	13.35	17.00	24.00
10	14.60	17.90	32.00
11	15.85	18.90	32.00
12	17.10	20.40	32.00
13	18.35	22.10	32.00
14	19.60	23.10	44.00
15	20.85	24.40	44.00

**Tape & Reel Package Size**  
 Straight = 1000 pcs/Reel  
 Right Angle = 1500 pcs/Reel

**HOW TO ORDER:**



**1. Series**  
 V7951

**2. Contact Number**  
 2~15

**3. Contact Type**  
 S = Straight  
 R = Right Angle

**4. Contact Plating**  
 T = Tin  
 G1 = Gold Flash  
 G5 = 5U" Gold  
 G10 = 10U" Gold

**5. Packaging**  
 B = Bulk  
 R = Tape and Reel  
 T = Tube